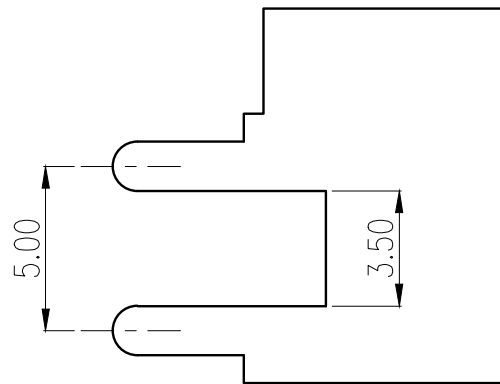
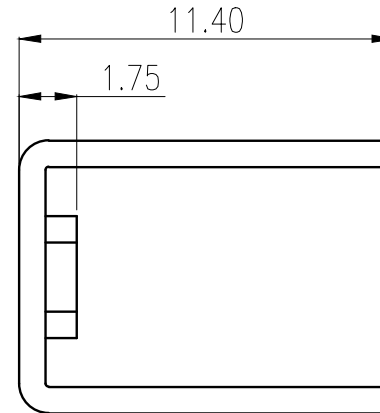
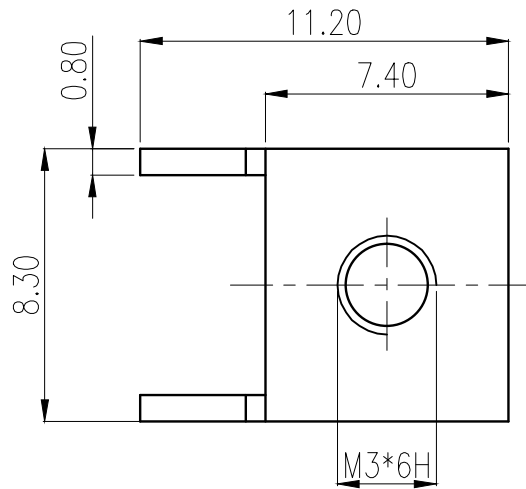


REVISION RECORD			
REV.	CONTENT	MOD.	DATE
△	初版发行		



技术要求:

1. 打铜底0.5-1 μ m, 镍2-2.5 μ m, 哑锡3-5 μ m。
2. 不得有变形, 毛刺等缺陷。
3. 插脚尖部符合可焊性要求。
4. 螺纹需符合通止规/止针要求。
5. 螺纹扭矩: 5 lbf·in。
6. ⊗为重点测量尺寸。
7. 材质: 黄铜H62 (Y2)。

	pitch dimension			Nominal dimension					— /
	over 0 to 6	over 6 to 10	over 10 to 24	over 0 to 30	over 30 to 60	over 60 to 100	over 100 to 150	over 150	
variable range	0 to 6	6 to 10	10 to 24	0 to 30	30 to 60	60 to 100	100 to 150	150	— /
Tolerance	±0.1	±0.15	±0.25	±0.2	±0.3	±0.5	±0.7	±1.0	0.05/10

1	EKS. 0*11.2*11.4/4+M3				黄铜	镀雾锡
NO.	NAME OF PART	NO. OF PART	Q'TY	MATERIAL	NOTES	
DES.	ZJL	DATE 2021/09/17	UNITS mm	THIRD ANGLE PROJECTION		SHEET
CHK.	DATE		SIZE A4	⊗		1 of 1
APP.	DATE		SCALE 1:1	DWG NO.	SP-2-7002001	REV: T0
 上海有乐电气有限公司 Shanghai YouLe Electric CO.,LTD				TITLE	EKS. 0*11.2*11.4/4+M3 EKS. 0*11.2*11.4/4+M3-产品	